

Dome Head Ex e Stopping Plug



Features

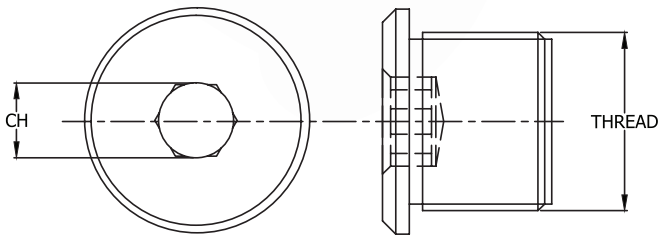
- Suitable for use in Zones 1, 2, 21, 22

Approvals



Certification & Standards

Approved to:	EN/IEC 60079-0, 60079-1, 60079-7, 60079-31, EN60529
EC TYPE Examination Certificate:	Baseefa 08ATEX0325X, IECEx BAS 08.0108X Ex db eb I Mb Ex db eb IIC Gb Ex tb IIIC Db IP65-66 UL1203 (Nickel Plated Brass and Stainless Steel only)
Temperature:	-60°C to +80°C



Nickel Plated Brass Part No.	Metric Thread	GID Code	Stainless Steel Part No.	Metric Thread	GID Code	Brass Part No.	Metric Thread	GID Code
EXN/M16/DSP	M16 x 1.5	7TCA297140R0143	EXS/M16/DSP	M16 x 1.5	7TCA297140R0116	EX/M16/DSP	M16 x 1.5	7TCA297140R0132
EXN/M20/DSP	M20 x 1.5	7TCA297140R0092	EXS/M20/DSP	M20 x 1.5	7TCA297140R0117	EX/M20/DSP	M20 x 1.5	7TCA297140R0038
EXN/M25/DSP	M25 x 1.5	7TCA297140R0096	EXS/M25/DSP	M25 x 1.5	7TCA297140R0119	EX/M25/DSP	M25 x 1.5	7TCA297140R0046
EXN/M32/DSP	M32 x 1.5	7TCA297140R0100	EXS/M32/DSP	M32 x 1.5	7TCA297140R0428	EX/M32/DSP	M32 x 1.5	7TCA297140R0054
EXN/M40/DSP	M40 x 1.5	7TCA297140R0145	EXS/M40/DSP	M40 x 1.5	7TCA297140R0429	EX/M40/DSP	M40 x 1.5	7TCA297140R0062
EXN/M50/DSP	M50 x 1.5	7TCA297140R0146	EXS/M50/DSP	M50 x 1.5	7TCA297140R0430	EX/M50/DSP	M50 x 1.5	7TCA297140R0166
EXN/M63/DSP	M63 x 1.5	7TCA297140R0144	EXS/M63/DSP	M63 x 1.5	7TCA297140R0431	EX/M63/DSP	M63 x 1.5	7TCA297140R0164